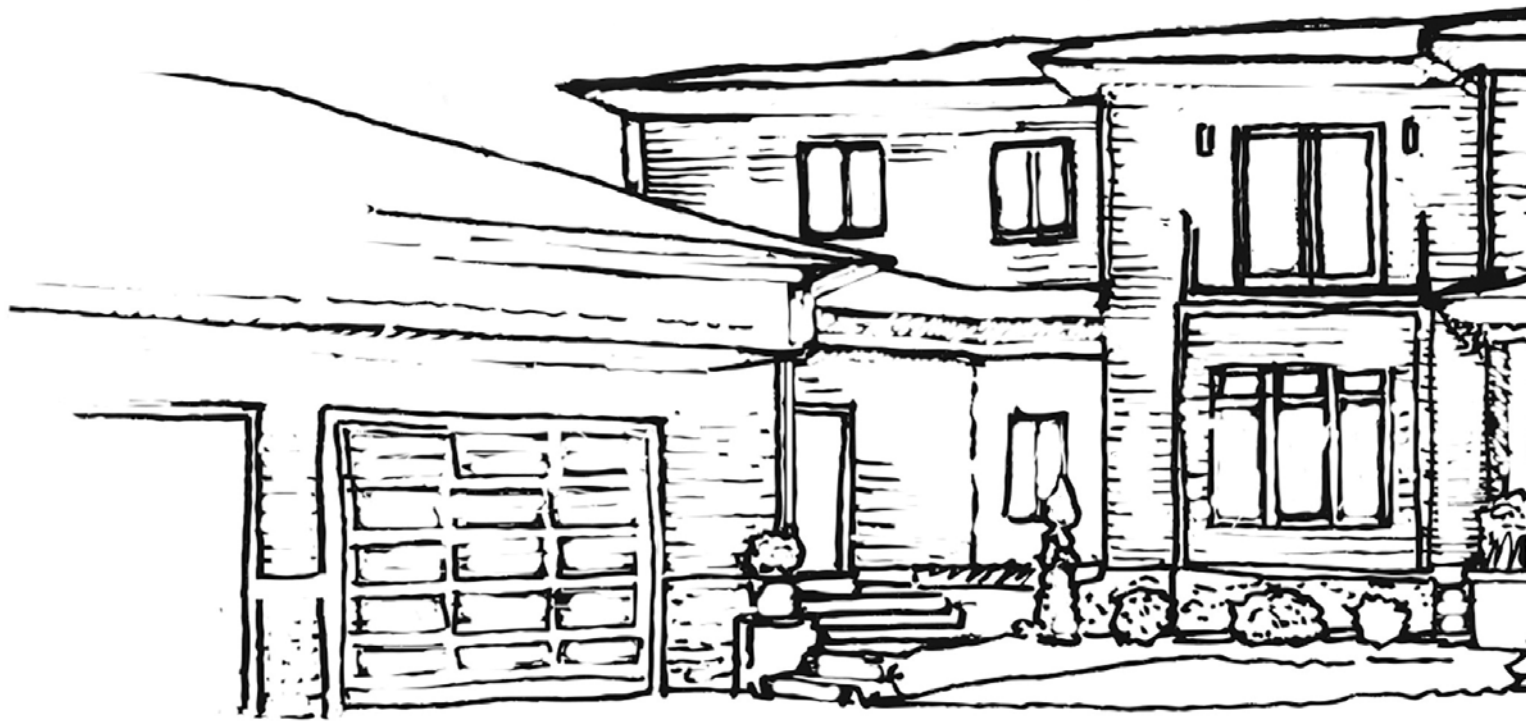


ASPIRE HOUSE

Princeton

Princeton, NJ



“We all took the lead from the architecture. The house had a very specific contemporary vibe with organic materials in many locations.”

– Joseph A. Berkowitz

“Princeton is a wonderful town full of diversity, knowledge and sophistication with a deep history in arts and culture.”

– Judy King

“With many people forced to work from home due to COVID, we decided our office would need to be more a sanctuary than a workspace.”

– Vivian Hung and Joe Giamarese



ILLUSTRATION BY GLYPH CO

“My design aesthetic leans a little more traditional/transitional. Designing this contemporary room was a wonderful opportunity to flex my creative muscles.”

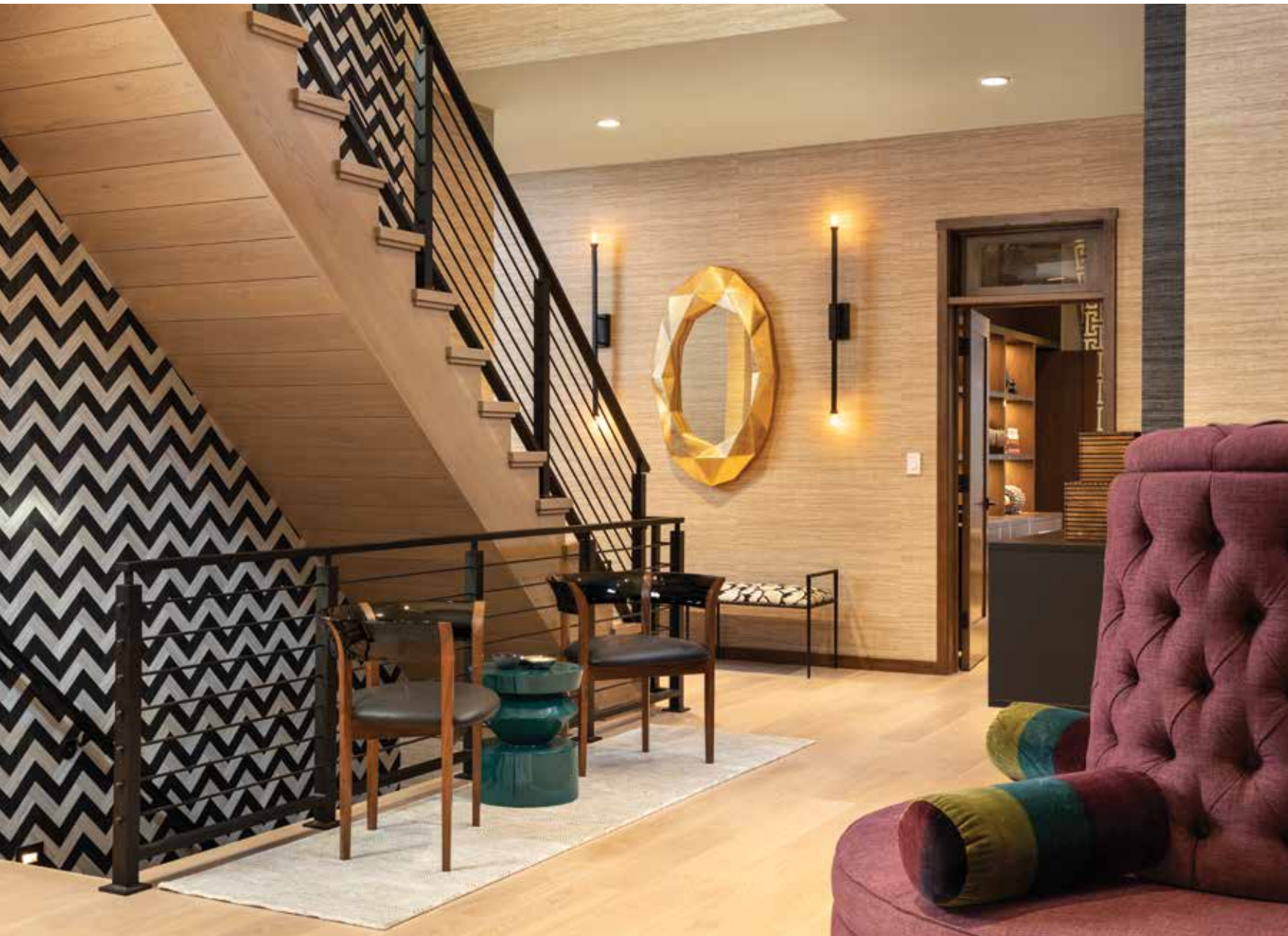
– Diane Durocher

“The biggest challenge was to make the room spacious, joyful, bright and cozy, adding the right color palette, thoughtful lighting, and key elements to make the room sumptuous but understated.”

– Alirio Pirela

A League of Its Own

TEXT BY DEBORAH L. MARTIN
PHOTOGRAPHY BY MIKE VAN TASSELL



The Entry is part Bohemian parlor and part refined art gallery. It is a curated collection of textured wallcoverings from Arte and unique furnishings, set against a backdrop of dry cerused wood panels and blackened steel. Chevron wallcovering adds a graphic punch all the way up to the second floor. A round banquette centers the expansive space.

JOSEPH A. BERKOWITZ

JAB Design Group



Diane Durocher Interiors



Diane Durocher, ASID, IIDA, CAPS, CID

Ramsey, NJ • 201.825.3832 • diane@dianedurocherinteriors.com • www.dianedurocherinteriors.com



In the **Library** designer Amy Manor used her childhood experiences and recent events surrounding racial justice to create a room that symbolizes and embraces diversity in all its forms. Manor explains, "My vision has remained the same but has taken on an unexpected direction of interpretation and individual discovery. Our mission is to never to forget the human sacrifices that will continue to make this world a better place." She used a dark, mesmerizing, and thought provoking palette to create a judgment-free space to discover and reflect on truth and beauty.

AMY MANOR

Red Bank Design Center



"I wanted to express the library as a room of diversity. My vision has taken on an unexpected direction of interpretation and individual discovery."

– Amy Manor

IN ITS STORIED HISTORY, the Ivy League town of Princeton, New Jersey has long been known for the best in education, the arts, and culture. It has also—since 1974—been known as a showhouse town. But in recent years that aspect of Princeton culture had ceased, until last year when ASPIRE DESIGN AND HOME launched ASPIRE HOUSE Princeton, in a contemporary home only a few minutes from the Gothic towers of Princeton University and its surrounding landmark mansions. A portion of the proceeds from the showhouse were set aside to benefit the education and careers of up-and-coming designers from underrepresented communities.

Despite the challenges of producing a project of this nature—and then opening it to the public—during a global pandemic, the home was widely acclaimed for its diversity of design and innovation. Sophia Koutsiaftis, Associate Publisher of ASPIRE DESIGN AND HOME explains, “It was a great pleasure collaborating with the enormously talented team of designers, showhouse sponsors, product sponsors, craftspeople, vendors and volunteers that all contributed to bringing this incredible home to life.”

FUNDS RAISED FROM THE SHOWHOUSE SUPPORTED SCHOLARSHIPS FOR ASPIRING DESIGN TALENT FROM UNDERREPRESENTED COMMUNITIES.

His Office In a world where everyone is re-thinking their office spaces, the designers created a room to excite the senses and give the occupant a sense of joy, movement, and discovery without having to venture too far. Although it’s a workspace, the room has a world-traveler vibe—exotic ikat and Greek key patterns interact with the area rug and drapery to inject energy into an otherwise orderly and luxurious space. A golden glow emanates from the custom built-in cabinetry and shelving by Florencia.

**VIVIAN HUNG &
JOE GIAMARESE**

Global Home Interior Design



“In our room, we combined contemporary with vintage, color with muted nature, and metal and linen. It’s the marriage of the elements in unity that makes for great design.”

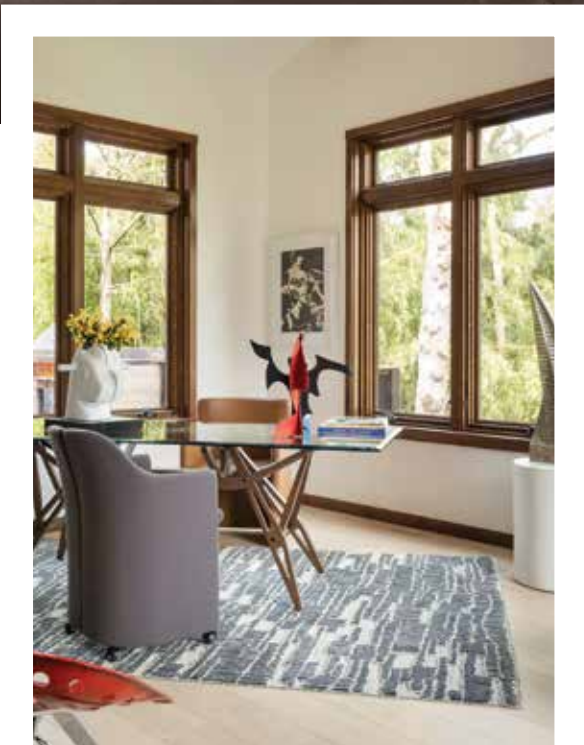
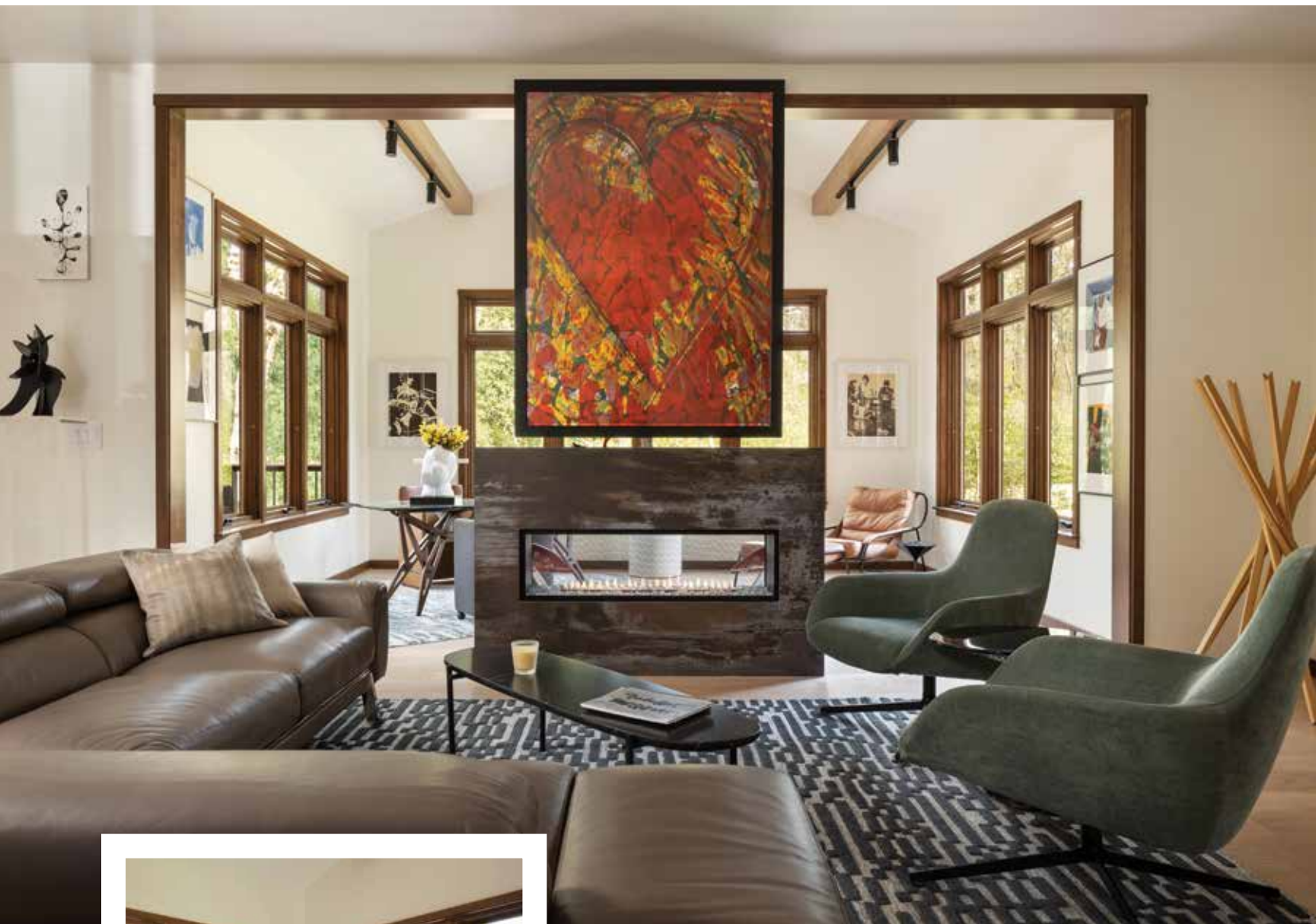
–Vicki Kelly Gindi and Tram-Anh Poprik



**VICKI KELLY GINDI &
TRAM-ANH POPRIK**

Red Bank Design Center

In **Her Office** the designers envisioned a room that translates to an escape in mind, body and spirit, where creativity can flourish, the mind can rest with nature, and form and focus can organically coexist.



The Great Room is inspired by a quote from Ludwig van Beethoven, "Music is the mediator between the spiritual and the sensual life."

ANNA MARIA MANNARINO

Mannarino Designs, Inc.

“The clients had a clear vision of what they wanted — they were looking for California Modern with elements of Asian style. We worked with them on selecting materials that had a natural feel.”

– Ginny Padula



Kitchen, Breakfast Lounge, and Butler’s Pantry To set the tone for the rest of the home, the homeowner asked Ginny Padula to create a warm, inviting space that serves as a family gathering spot with a cool California vibe and touches of zen. Padula elected materials that were sleek yet earthy and natural to create this aesthetic. They chose a flat door style with hidden hardware for the custom cabinetry, sourced through the designer’s firm, allowing the dramatic graining of the naturally finished walnut to shine, and become the focus of the kitchen. The Silestone countertops in a subtle white marble lighten up the space, and the same material is also used for the waterfall edge and up the backsplash, drawing the eye from the floor up through the space. Rich jewel tones and mixed metals layered over this earthy base fill the space—making it feel modern, comfortable, and warm. The cozy breakfast lounge makes this working kitchen the perfect place to entertain or gather with family and friends.

GINNY PADULA

Town & Country
Kitchen and Bath



Kitchen, Breakfast Lounge, and Butler's Pantry In the kitchen, the cabinetry shines, merging function and design to create a cohesive whole. Selections including finishes, materials, and colors, as well as appliances from Signature Kitchen Suite, are the focus. The design team created a kitchen, seating area, and pantry that looks effortless in its simplicity, but represents the best in design.

GINNY PADULA
 Town & Country
 Kitchen and Bath



“I was inspired by the gorgeous views of the koi pond and bamboo shoots in the backyard, as well as the predicament of the pandemic.”

– Tamu Rasheba Green



TAMU RASHEBA GREEN
Lux Pad Interiors

Mudroom Transition The mudroom is designed to have the grandeur of a foyer, but with a personalized and intimate feel. Motifs and materials, like the scenic wallcovering and buckwheat filled cushions (traditionally used in Japanese meditation pillows), pay homage to the heritage of the homeowners. A cheerful atmosphere provides a place to release the tension of the day while custom built-ins and closets offer space to remove more physical baggage. The enclosed powder room invites guests to a ceremonial hand washing experience before entering the home’s main quarters. The space functions as a transition from the outer to the inner world with a design that is rooted in traditions of the past, responsive to the needs of the present, and reflective of the mindful living practices of the future.



Dining Room Designed as a private paradise, designer Sam Ciardi's dining room is a study in blending styles and global influences. Antique wooden panels set a dramatic backdrop, while Italian dining chairs paired with a custom oval dining table by Tightrope NYC create the ultimate expression of luxurious minimalism. A dark, earthy ceiling allows for dozens of illuminated vessels to appear suspended in midair, in the chandelier by Currey & Company. Deep green lacquer covers a bespoke credenza, and a painting by Sebastian Vallejo hangs over the bold palm frond textured walls.

SAM CIARDI

Samuel Robert
Signature Spaces

**ALIRIO PIRELA**

Pirela Aterlier

Drawing Room A celebration of the atypical and unexpected, the Drawing Room embodies sumptuous serenity, in which the designer created a multifaceted space that is inviting, alive with history, culture, and modernity. The resulting space is a sophisticated medley of styles ranging from American Art Deco to European midcentury, and modern emerging artists. "Rooms are photo albums that evoke memories," explains the designer. "They are colors, textures, scents, and sounds that hold pieces of your past and create the promise of your future. How you decorate them should remind you of experiences that have brought you – and will continue to bring you – happiness and well-being."





JUDY KING

Judy King Interiors

Master Bedroom Designer Judy King created a master bedroom suite where the soft lines of the mural wall blend beautifully with the natural vein of the fireplace stone, drawing the eye across the room. By incorporating simple, yet distinguished furnishings, the space is tied together with comfort and sophistication in mind. The beginning and ending of the day is spent in the master bathroom and walk-in closet, where opulence and practicality were in mind while designing.



Master Bath designed By Ginny Padula and styled by Judy King, incorporates Town & Country's cabinetry with the same clean, minimalist aesthetic found throughout the home, giving the room the relaxing feel of a Japanese spa, with tub and fixtures by Kohler.

GINNY PADULA

Town & Country
Kitchen and Bath



**Closet, Dressing Room,
and Fireplace lounge**

The designer worked with Florense to create a bespoke walk-in closet and dressing area, as well as a cozy corner anchored by a fireplace by Igne Ferro USA, and glowing built-in shelving for art collections and books. The comfy vintage chairs are recovered in faux leather by Kravet, and provide the perfect place to curl up with a book or simply gaze into a roaring fire.

JUDY KING

Judy King Interiors





Boy's Room Diane Durocher's Young Explorer bedroom is inspired by the idea that adventure, curiosity and exploration are what opens young minds to infinite possibilities. For the design of Julian's bedroom, she imagined a nine year old boy's curiosity about the world, travel, and life. The palette and furniture were selected so that the decor can grow with him, and create a timeless space for homework, reading, and dreaming big dreams. Built-in shelving by Florense provides ample space for displaying treasures and books.

DIANE DUROCHER
Diane Durocher Interiors



The **Bath**, designed by Ginny Padula and styled by Diane Durocher, carries on the color scheme of the boy's room with a backsplash wall of deep navy tiles from Garden State Tile, wood grain cabinets from Town & Country Kitchen and Bath, and fixtures by Kohler.

GINNY PADULA
Town & Country
Kitchen and Bath

The **Guest Bedroom** was designed by Gail Davis as a cozy retreat for when family members visit. The dark and enveloping environment makes guests feel as if they are on a five-star vacation once the door closes, shutting out all outside distractions. Davis conceived the dark walls to act in contrast to the light floors and the Juliet balcony that overlooks the front of the home. The bed is upholstered in plum-colored velvet, adding a vibrant pop of color and sensual texture. This bedroom is the perfect guest retreat.

GAIL DAVIS

Gail Davis Designs

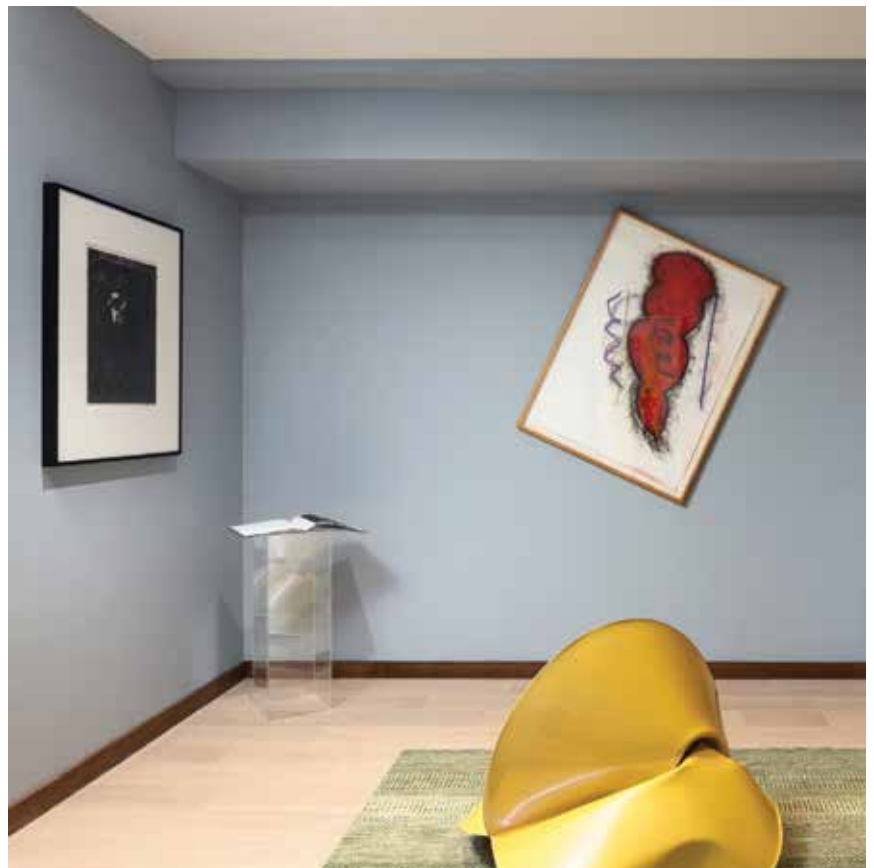




DONALD CHRISTIANSEN

Chelsea Art Group

The Pop Art Gallery Don Christiansen, president of Chelsea Art Group—experts at dealing with museum collected artists—was very excited to be invited to participate in the Aspire House Princeton project. The Gallery space was populated with leading artists in the genre. “We wanted something exceptional to fill the large space,” he says. TOP LEFT: “We were very lucky to have available the Roy Lichtenstein.” TOP, RIGHT: “The large yellow works were done by Pat Steir,” explains Christiansen. “She is best known for her abstract dripped, splashed and poured Waterfall paintings.” BOTTOM, LEFT: “Also in the room was a large work on paper by Elizabeth Murray,” he adds. “Her cartoonish paintings, prints and drawings bridge the gap between surrealism, conceptualism and pop art.” BOTTOM RIGHT: Canadian artist David Craven “includes text in his paintings, which were inspired by conversations he heard as people walked by the studio,” says Christiansen. “We decided to have a little fun and make a David Craven room which featured several of these works on one wall so that they, too, may be in conversation.”





“We worked with the designers and provided modern and contemporary artworks from Jaume Plensa, Roy Lichtenstein, Willem de Kooning, Julian Schnabel, Andy Warhol, Jim Dine, Jeff Koons, Cristo, Donald Sultan, Milton Glaser, John Cage, Jesús Morales and Sebastian Vallejo.”

– Donald Christiansen



**GINNY PADULA**

Town & Country
Kitchen and Bath

The **Wet Bar** is an entertaining space that is both cool and modern, yet comfortable and soothing. The bar is made from sleek, dark, high-gloss stained oak cabinets from Town & Country Kitchen and Bath, paired with an ultra-durable matte countertop by Dekton to anchor the space, making it the eye-catching center of the room. Softer earth tones in the fabrics and decorative elements create a calming juxtaposition. Taking inspiration from the homeowner's heritage, Padula brought in layers of natural materials and vintage pieces with Asian influences to deepen the feel of a place to enjoy the company of family and friends.

**DONALD CHRISTIANSEN**

Chelsea Art Group

Jeanne Silverthorne emerged into an art world dominated by men and minimalism. Her preferred medium: hand-crafted rubber. "Rubber has many connotations for her: material that is not always used in art, something common, durable, flexible—all qualities Silverthorne thinks are important in life," explains Christiansen. Chelsea Art Group chose to include her piece "Exit Sign with Fan," made of phosphorescent neoprene that charged daily and glowed at night, to "show how the use of unusual, unexpected art objects can liven a room." The piece was also featured in Silverthorne's exhibition at the Whitney Museum of American Art.

THE BOLD LOOK
OF **KOHLER** robern KALLISTA.





HOME IS WHERE THE HEART IS.

GPS something for everyone



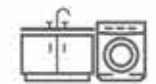
KITCHENS & CABINETS



BATHROOMS



LIGHTING



UTILITY ROOMS



KITCHEN
BATH
LIGHTING
CABINETS

General Plumbing Supply

1.800.CALL GPS | shopgps.com

Schedule your design consultation online or by phone
For a list of locations visit our website

Design: Town & Country Kitchen and Bath for ASPIRE House Princeton; Photos: Mike Van Tassel

1



2



Style Diary

*A selection of inspirational
design from the showhouse*

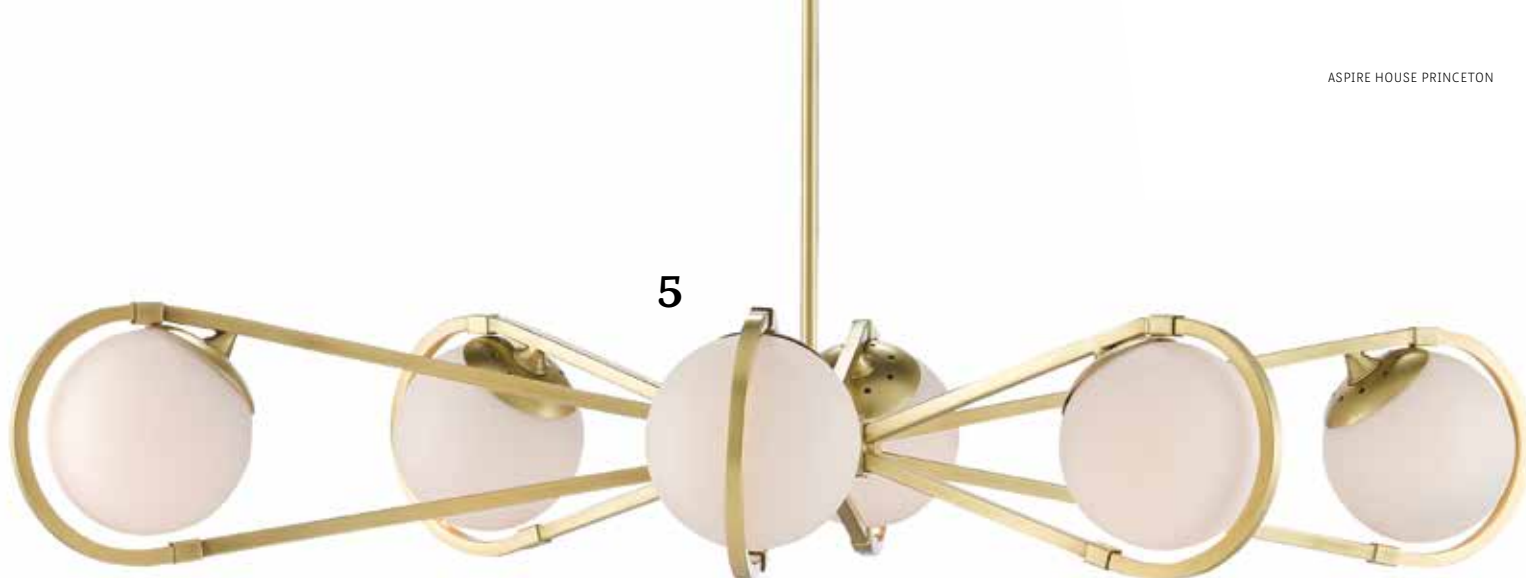
BY SAMANTHA EMMERLING

3



4





- 1** ARTE, Combine wallcovering from the Oculaire collection; arte-international.com **2** TIGHTROPE, Moon River hand-blown glass pendant; tightrope.nyc **3** SIGNATURE KITCHEN SUITE, 48-inch Dual Fuel Pro Range with Sous Vide, Induction and Gas; signaturekitchensuite.com **4** SAMAD, Cane rug in Café, from the Mystique Collection; samad.com **5** CURREY & COMPANY, Montvale Chandelier in Brushed Brass; curreyandcompany.com **6** LG, LG Styler Steam Clothing Care System; lg.com

For the full range, visit
aspiremetro.com/stylediary

Above and Beyond

WITH GRATITUDE TO OUR PARTNERS

Chelsea Art Group; chelseaartgroup.com
 Cosentino; cosentino.com
 Faithful Countertops; faithfulctrtops.com
 Fiber-Seal Northeast; fiberseal.com
 Florense; florense.com.br
 Garden State Tile; gstile.com
 GPS; generalplumbingsupply.net
 Igne Ferro; igneferrousa.com
 Jammer Doors; jammerdoors.com
 Kohler Signature Store by General Plumbing Supply;
generalplumbingsupply.net
 Mrs. G Appliances; mrrsgs.com
 Raynor Garage Doors; raynor.com
 The Shade Store; theshadestore.com
 Town & Country Kitchen and Bath; tckbdesigns.com

All paint provided by Benjamin Moore

For more information, please visit aspiremetro.com/stylediary

PRINCETON SHOWHOUSE RESOURCES

ENTRY FOYER Page 166

Joseph A. Berkowitz

Bright Lights, *Ceiling Light Corbett Lighting; Arteriors, Chair, side table, bench, mirror, lighting next to mirror; Uttermost, Wood Vessel Wall Art; Leftbank Art, Artwork; Patagonia Home, Custom Round Banquette Design by JAB Design Group; Avant Guard, Banquette Fabric; Harlequin, Pillow Fabric; Arte, Wallpaper; Drapery Fabric, Debellis Showroom Pollack*

OFFICE Page 168

Amy Manor

Kari Elizabeth Designs, *Hermès Pillow, Louis Vuitton Bench; ST2, Tables; Platinum Furniture, Kelvin Giomani Chairs and Sofa; Franco Lacosta, Hand-painted fabric drapes; Patt Pitt, Drapery Installation; Florense, Built in; L&B Cigars, Cigar Boxes; Loloi, Rug; Parlor Gallery, Art Gallery; Jennifer Gennari, Art; Gavin Benjamin, Art; Sam Tufnell, Art Sculpture; Ray Geary, Art Sculpture; Zac Cavalluzzi, Tape-Art Table; Sherwin Williams, Paint; Janell's Designs, Wall Painting; Lux Designers Solutions, White Glove Delivery*

HIS OFFICE WORKSPACE Page 169

Joe Giamarese & Vivian Hung

GlobalHomeNY.com by Arteriors Home, *Parnell Desk, Beck Chair, Barbana Chair; LGS Studio, Los Angeles, Studded Barrel Lamp; Thibaut, Office Wallpaper, Closet Wallpaper; Princeton Rug Gallery, Tribal Print Rug; The Shade Store, Drapes; Chelsea Art Group, Sculptures; Selamat Design, Sydney Lounge Chair; Made Goods, Coffee Table; Visual Comfort, Brass Floor Lamp; Eva Peck, Wooden Box's; R.E.D.S. Delivery Service, White Glove Delivery Service; PTX Painting, Wallpaper hanging*

HER OFFICE WORKSPACE Page 170

Vicki Kelly Gindi / Tram-Anh Poprik

Kari Elizabeth Designs *Hermès Pillow, Fendi FF Logo Pillow, Louis Vuitton Bench; Paper Moon, Accessories; Tightrope Lighting and Furniture, Moon River Chandelier; ST2, Desk; Highland House, Bench; Hudson Valley Lighting, Lamp; Precedent, Bar Cart, Side Table; Made Goods, Chair; Romo Fabric, Drapes; Pat Pitt, Drapery Installation; Jaipur, Rug; Florense, Built in; Parlor Gallery, Art Gallery; Ray Geary, Art Bench, Art Sculpture; Andre Veloux, Art; Michela Martello, Art; Benjamin Moore, Paint; LUX Designers Solutions, White Glove Delivery*

THE GREAT ROOM Page 171

Anna Maria Mannarino

Naturalist Wall Gardens; Zanotta; Chelsea Art Group, *Artwork; Creative Touch, Rugs*

KITCHEN AND BUTLER'S PANTRY, LAUNDRY ROOM, WET BAR AND ALL BATHROOMS Page 172

Ginny Padula

Blue Handmade Pottery; Ceramic Tray; Cosentino, *Countertop; Garden State Tile, Tile; General Plumbing Supply Kohler Signature; Laurie Subers Fine Art; Miele; Plum Wine Brands; Signature Kitchen Suite Subzero; T&C Mercantile, Accessories; Town & Country Kitchen and Bath, Custom Cabinetry*

MUDROOM Page 174

Tamu Green

Circa Lighting; Florense, *Custom Closets; Millenium Glass Inc., Mirror; Polo and Brothers Studio, Cushion, Pillows, Window Shade; Thibaut, Cushion, Pillows, Window Shade; Thibaut; Town & Country Kitchen and Bath, Custom Bench and Bookshelf; Worlds Away, Console Table; PTX Painting Inc, Wallpaper Application*

DINING ROOM Page 175

Sam Ciardi

Benjamin Moore; Chelsea Art Group; Design Hub; Florense; Pirela Atelier; Thibaut; Tightrope; Currey & Company

DRAWING ROOM Page 176+177

Alirio Pirela

Pierre Fray; Dedar Milano; Webster Carpets and Rugs; Chelsea Art Group; The Shade Store; Carol Eagan; Maison Gerard; Kravet; Currey & Company

MASTER SUITE Page 178

Judy King

Terry Comella, *Art; Jeffery Zepp, Wallpaper Installation; Lima Trading, Bed; WAC Lighting, Reading Light; Princeton Rug Gallery, Area Carpets; Maxwell Fabrics, Vintage armchairs, reupholstered in Maxwell Fabrics; Florense, Built in Shelving & Closets; The Mock Fox Store, All vintage, bedside table, chest of drawers; Egg Culture, Pottery, Buddha statue, Floor Lamp, Fur Stools, Ash Tray & Pipe; Morpeth Gallery, Wall Art; Custom designed by JKI, Maxell Vegan Leather, Zebra Cushion Top Bench; Worldwide Window Fashions, Plantation Shutters; Phillip Jeffries, Mural Wallpaper; Thibaut, Small Hallway (Bath/Closet); Ashton Whyte, Bed & Bath Linens; Gary Gandleman, Wall Mirror, Chinese Dragon Statues, 1930's James Mont Pictures; Kravet, Silver Leaf Pair of Bedside Table Lamps*

CHILDREN'S BEDROOM Page 180

Diane Durocher

Benjamin Moore, *Paint; Creative Touch, Rug and rug pad; Designer's Resource, Window treatment panels hardware; Fiber Seal; Kravet, neckroll and window seat pillow, window seat cushion, window treatment panels fabric; Murals Your Way, Ceiling center map mural; PaintTek Installation of wallpaper and ceiling mural. Labor of painting the walls and ceiling; Samuel & Sons, Window treatment panel band, pillow cords; Shades of Light, Sconces flanking the bed; Steve's Custom Drapery, All window treatments, window seat cushion, window seat pillows, chair lumbar pillow, bed foot cover, bed neckroll & bed shams; Thibaut, Bedroom wallpaper (accent and main), bathroom and closet wallpaper, fabric on bed shams, bed foot cover, window seat pillows (abstract print), chair lumbar pillow and window treatment shades; Tightrope Lighting and Furniture, Desk lamp and floor lamp by chair; Urban Natural, Bed, mattress, nightstands, corner chair and ottoman; Florense, closet, bedroom built in, and window seat; Home Goods, Accessories; Amazon, Board games, telescope, window seat map and plane pillows; Wayfair, Desk Chair; Art.com, All plane art*

GALLERY SPACE Page 182+185

Chelsea Art Group

Chelsea Art Group, *Artwork*